

# SPECIAL FINISHES (NZ) LTD

PO Box 69 038, Glendene 0645  
16 Culperry Road, Glendene  
Auckland, New Zealand

BETTER CHEMISTRY

Telephone: 0064 9 818 9595

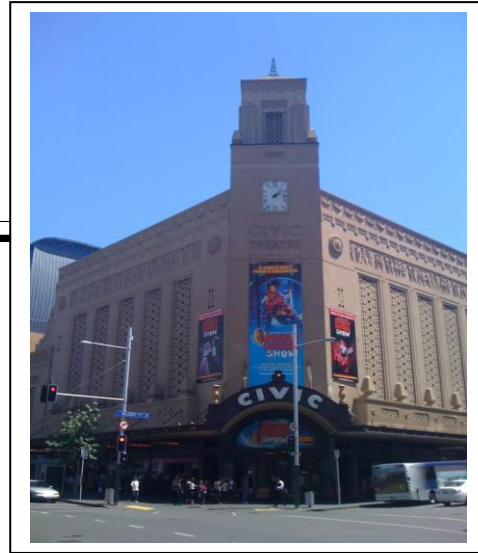
Fax: 0064 9 818 9892

Web Site: [www.specialfinishes.co.nz](http://www.specialfinishes.co.nz)

Email: [office@specialfinishes.co.nz](mailto:office@specialfinishes.co.nz)

## MINERALBOND

Mineral Silicate Coating System



MineralBond is a liquid applied mineral silicate coating system utilising the very best waterbased environmentally friendly resin technology & inert formulations.

MineralBond is specifically designed to protect exterior concrete facades by chemically reacting with the free lime in concrete to form a hydrophobic coating system (in conjunction with Sealcoat 60) within the concrete structure, allowing the structure to breath naturally. Stonebond also prevents the formation of mould, fungi and algae growth and allows designers to protect new and historic structures with a natural stone effect in a wide range of natural colours, ideal in Tropical & Temperate climates.

### **FEATURES :**

- Environmentally Friendly Waterbased Formulation
- Exceptional resistance to weathering with long term protection of buildings and facades.
- Low V.O.C & low odour
- Easy application
- Excellent adhesion to a wide variety of substrates including concrete, brick, mortar & plaster etc
- Excellent UV Resistance properties
- Highly vapour permeable, allowing the concrete substrate to breath
- Unique chemical bonding offers exceptional durability and prevents UV Degradation in comparison to other mineral silicate systems
- Zero Ignition when subject to open flame
- Anti-carbonation coating system offering protection against acid rain.
- Provides an opaque effect maintaining the natural integrity of the substrate.
- Protects historic structures with a natural appearance in a wide range of natural colours.
- Excellent for weatherproofing concrete
- Tools clean up with water
- Specially formulated for tropical climates

### **USES :**

MineralBond can be used over a number of concrete substrates, new or old where hardwearing low dirt pick-up properties, along with additional durability, abrasion, and chemical resistance are required including sea salt spray regions and areas.

MineralBond can also be used in conjunction with Special Finishes Graffiti Protection Systems & Hydrophobic Coatings, offering an excellent finish that will weather well in tough UV conditions and stand the test of time.

Based on its ability to repel both potable and salt water solutions, and its ability to allow the transmission of water vapour, MineralBond is ideal as an anti-carbonation coating system used in the protection of structural steel in concrete structures.

### **Technical Information**

Specific Gravity 1.51g/cm<sup>3</sup>

pH 12

Water Vapour Transmission Rate >1500g/m<sup>2</sup>d

Liquid Water Permeability Very Low

### **QUV Weatherometer Testing**

AS NZS 1580:483.2

MineralBond has been independently tested with respect to exposure to QUV Accelerated Weatherometer testing.

Results of this testing clearly show that MineralBond exhibits no change or discolouration after 1000hours of testing, which under the test conditions approximates to 10 years exterior exposure.

This testing is also confirmed with several landmark sites in New Zealand including the Civic Theatre, and The Ferguson Buildings which have been in service for many years with excellent results.

### **Packaging**

MineralBond is supplied in 4L, 10L and 20L units

### **Coverage**

Apply MineralBond to a clean and prepared substrate with 2 coats applied at 0.4-0.5kg/m<sup>2</sup>. Ensure 5 hours rain free drying time between each coat and the final coat. Water streaking may occur should the coating get wet prior to curing.

### **DRYING TIMES :**

Touch dry 20-90 minutes (at 20°C)

Full cure 8-24 hours (depending on ambient temperature)

### **SUBSTRATE TEMPERATURES :**

Do not apply MineralBond in temperatures below 5°C.

### **APPLICATION :**

By brush, roller, conventional or airless spray.

NOTE: Ensure all aluminium joinery, glass, ceramic tiles etc is protected during application with vinyl tape, clear plastic film. All splashes and overspray must be washed off immediately with clean potable water.

### **CLEAN UP :**

MineralBond is non toxic and waterbased. For best results use detergent and warm water. Ensure you comply with all local government regulations with respect to waste disposal. Recycle where ever possible.

### **SAFETY & HEALTH :**

Keep skin clean at all times - Use barrier creams on hands before use. Wear protective overalls and gloves. Use goggles and approved organic vapour cartridge respirator when Spraying.

Eye Contact: Flush with copious amounts of water

Seek immediate medical aid. Skin Contact: Wash thoroughly with soap and warm water.

DANGEROUS GOODS Classification: NA  
(non-flammable - waterbased)

**WARNING: Observe new Occupational Safety & Health (O.S.H.) Instructions & Local Government Regulations with respect to the use and installation of resins.**

All Special Finishes Systems are manufactured to the highest possible quality and standard, and are warranted for their use in properly characterised environments, when applied correctly. Special Finishes accepts no responsibility for any consequential loss or damages arising from claims whilst using this material. Any claim will be limited to the purchase value at the time of purchase.





